



**TERM 2, WEEK 3, 2026**

*our people. our place. our stories*



## Principal Post

4<sup>th</sup> May - 8th May

Kia ora e te whānau, kumusta, ayubowan,

Welcome to Madison, who has joined Kōwhai. We look forward to getting to know you and your family as part of our school community.

This week, school photos were taken at the Clifden Suspension Bridge, which features in our school logo and motto, "Always Our Best / Tonu tō tātou pai." Although the morning began with a fresh autumn chill, it turned into a beautiful day and provided a special setting for our photographs. The photo gallery is now available to view and purchase via the link Karen shared through HERO.

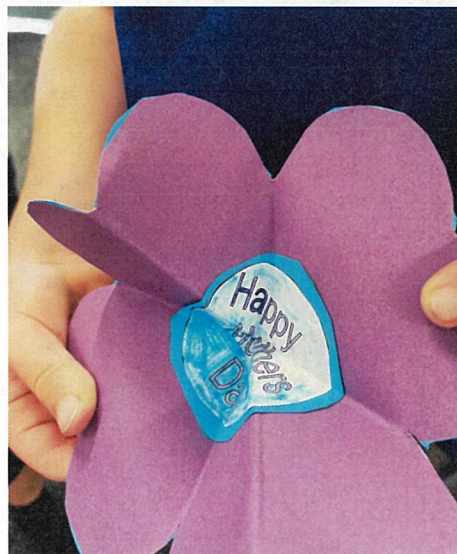
Most of the SMART Assessments in Reading, Writing, and Mathematics for our Year 3-8 students have now been completed as part of the Government's initiatives. At this stage, we can only access overall scores, correct and incorrect responses, and percentages. In six weeks, we will receive a more detailed analysis of the data. As this process is new for both staff and students, we are continuing to learn as we go and will share more specific information about individual progress once all details become available.

A friendly reminder for all parents of students who travel on school buses, including when using Go Bus or South Bus for Hauroko Valley Primary School excursions, to please review the Bus Code of Conduct. Next week, students in Kōwhai, Mataī, and Tōtara will need to complete and return these forms as we continue updating our policies and procedures.

Happy Mother's Day to the incredible women who shape our lives with unconditional love, wisdom, and warmth. Whether you are a mother, grandmother, or someone who plays a special nurturing role in the lives of others, thank you for all you do for our families and community. We wish you a day filled with the same joy and care that you bring to others every day.

Ngā mihi, Julia,  
on behalf of the Hauroko Valley Primary team

# ALWAYS OUR BEST



**Kewhai**



**Matat**



# Tētara



# Rātā



# H.V.P. Bus Code of Conduct

**Please read and reinforce expectations with your children.**

Please ensure you and your child/children have read and understood this Bus Code of Conduct, which is to be adhered to for the safety of the bus driver and all students travelling on the school bus. This covers Daily School Buses, Year 7 & 8 Technology transport, Swimming, School Photos, and any other times when Hauroko Valley Primary School students utilize a school bus.

This Bus Code of Conduct has been taken from our School Docs which outlines our school's policies and procedures. Travelling via bus to events comes under Bus Safety, Behaviour and Incidents, and the Daily Bus.

## **Bus Code of Conduct**

This Bus Code of Conduct is between \_\_\_\_\_ (student), \_\_\_\_\_ (their parents), Go Bus/South Bus(bus operator/s), and Hauroko Valley Primary School.

I, \_\_\_\_\_ (student), agree to abide by the behavioural expectations described below:

- When I am a seated passenger, I will remain in my seat for the whole journey.
- I will not eat on the bus or throw anything inside or out of the bus.
- I will respect other students and their property at all times (this includes pushing, verbal or physical abuse, or any other behaviour that may distract the driver).
- I will use socially acceptable language when conversing with the driver and/or other students and I will not speak at a volume that may distract the driver.
- I will respect the property of the bus operator at all times (e.g. refraining from standing on seats or vandalising the vehicle in any way)
- I will not engage in any behaviour that could put the driver or other students at risk.
- I will observe the requirements and instructions of the bus driver and the teacher/s responsible for bus duty at all times.
- I understand that any damage I cause to the bus will result in my parents being billed for the cost of repairs.

The safety and comfort of everyone on the bus depends on a standard of behaviour and consideration for others that is expected in the classroom. We hope that caregivers will support the school in maintaining these standards of behaviour.

## **If this Code of Conduct has been breached;**

1. The student will be placed on daily report for one week and the parents will be notified immediately
2. If no improvement is evident after one week, an interview will be arranged between the student, parents and school.
3. If there is still no improvement, travel on a school bus will be withdrawn, and the parents will be required to find alternative transport to get the student to school.
4. In extreme cases of misbehaviour, the privilege of travelling on a school bus could be withdrawn immediately.

# TŌTARA'S ANZAC ARTWORK & WRITING

Tōtara students explored a range of painting techniques while reflecting on the themes of Anzac Day. They experimented with colour, texture, and brushwork to express ideas of remembrance, respect, and storytelling. Through their work, students developed both their technical skills and their understanding of the significance of Anzac Day, creating thoughtful and meaningful pieces that honour this important occasion.



Students also explored creative writing by crafting pieces from the perspective of a symbol of war. Using imagination and empathy, they wrote from the viewpoint of items such as medals, poppies, and soldiers' belongings, bringing history to life through unique voices. This activity helped students deepen their understanding of the experiences and emotions connected to war, while developing their descriptive language and storytelling skills.

**World War II**

I remember growing on a wide field as a small flower, black cloudy smoke surrounding me. Thud! Another soldier falling to the ground. Thud agghh ka-boom! Different horrible sounds fill the poppy fields. Another soldier falls and squishes me into the ground. I feel the rhythm of his heart slowing down. The colour of his blood oozing out of his body matches my petals. As my stalk breaks, his face goes pale. We both lay to rest on this field, among many others.

Ava Pieper

**Protecting My Soldier**

I remember he picks me up clipping my straps under his chin. Walking into the cold muddy trenches, the cold mud stuck to my soldier slowing him down, when he needed to be fast. The enemy getting closer, men falling down on a cold autumn day. As we're running into battle, bullets deflecting off me. My soldier kept running, bullets pinging everywhere. Bangs of rifles filled the air all around me. Suddenly, a loud explosion of dirt and rocks hitting my soldiers head. My job is to protect the soldiers head. I can only protect him for so long.

Bill Macpherson

**My Service at Gallipoli, World War II**

Seeing all of dead people on the red and green field.

I feel a tug on my reins forcing me to get into a gallop.

The sound of guns and bombs fill the air.

The bodyweight of the soldier on my bare back, demanding more orders.

All of the cuts and scars I get from the frontlines of the battlefield burning underneath my fur.

The smell of smoke and gas fills the air.

I eventually get the taste of fresh grass when World War II finished. The great feeling of trotting alongside my fellow survivors, knowing we have represented our country.

Eva Jordan

**World War II**

I remember hair sticking towards me. Mud drenching my boots. Quills bouncing off me. I was so tired. There is a funny smell in the air. The sky is gray and dark as if its sad about the war. There is loud exploding noises. I can smell smoke in the air. There are flames erupting here and there the drone of a low flying German plane. Suddenly, it bombed us. I got my tent dent from a piece of shell. You can see ships in the bay, dead bodies every way you look. I don't want to be here but its a matter of life or death. If I wasn't here my soldier would be dead by now, I know he needs my protection. I will sit on his head for as long as he stands.

# MITEY

## *Mana Whānau*

Last term at HVP, our Mitey focus was on building learning environments where everyone felt safe, valued, and felt a sense of belonging. When we feel like we are a valued part of a group, it helps strengthen our mana whānau.

Mana Whānau is about knowing that we are an important and valued part of our whānau, including our school whānau. It develops when students feel supported by family, peers, teachers, and the wider school community, and when they know their strengths, interests, and contributions are recognised and appreciated.

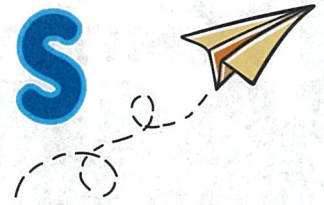
Throughout the term we shared aspects of our identity through various activities, played co-operative games, and created class expectations together. These experiences helped us get to know each other better and build stronger, more respectful classroom communities.



As a reminder that we are all part of a wider school family, we created a korowai. Each learner, teacher, and support staff member designed a feather to add to the korowai, symbolising that together we support and look out for one another, and that we always have each other's backs.



# TERM DATES



## Term 2

Monday 20<sup>th</sup> April - Friday 3<sup>rd</sup> July

**Public Holiday** - Anzac Day - Monday 27<sup>th</sup> April  
**Public Holiday** - King's Birthday - Monday 1<sup>st</sup> June

## Term 3

Monday 20<sup>th</sup> July - Friday 25<sup>th</sup> September

## Term 4

Monday 12<sup>th</sup> October - Wednesday 16<sup>th</sup> December

**Public Holiday** - Labour Day - Monday 26<sup>th</sup> October



# DIARY DATES

## Term 2

**NB: KSOM every Thursday apart from Thursday 21<sup>st</sup> May as Interschool Cross Country at Waiau Area School**

- Tuesday 12<sup>th</sup> May - SBHS Meeting 7.00 pm-8.00 pm at HVP
- Wednesday 13<sup>th</sup> May - Discovery 1.30 pm - 3.00 pm
- Friday 15<sup>th</sup> May - Technology Year 7&8 at WAS
- Monday 18<sup>th</sup> May - Board Meeting 7.00 pm
- Wednesday 20<sup>th</sup> May - Discovery 1.30 pm - 3.00 pm
- Thursday 21<sup>st</sup> May - Interschool Cross Country at Waiau Area School
- Friday 22<sup>nd</sup> May - Technology Year 7&8 at WAS
- Wednesday 27<sup>th</sup> May - Discovery 1.30 pm - 3.00 pm
- Friday 29<sup>th</sup> May - Western Cross Country at Otautau
- **Monday 1<sup>st</sup> June - King's Birthday/Public Holiday/No School**
- Wednesday 3<sup>rd</sup> June - Discovery 1.30 pm - 3.00 pm
- Wednesday 10<sup>th</sup> June - Discovery 1.30 pm - 3.00 pm
- Friday 12<sup>th</sup> June - Southland Cross Country at Waimumu
- Monday 15<sup>th</sup> June - Board Meeting 7.00 pm
- Wednesday 17<sup>th</sup> June - Discovery 1.30 pm - 3.00 pm
- Friday 19<sup>th</sup> June - Mid-Year Reports Go Home
- Tuesday 23<sup>rd</sup> June & Wednesday 24<sup>th</sup> June - EOTC Year 8 to Dunedin
- Tuesday 23<sup>rd</sup> June & Wednesday 24<sup>th</sup> June - Mid-Year Parent-Teacher Conversations
- Wednesday 24<sup>th</sup> June - Discovery 1.30 pm - 3.00 pm

**YEAR 5&6 CAMP  
FUNDRAISING**

# **AMERICAN HOT DOG**



**\$4**

**PRE-ORDER  
TUESDAYS**

**For lunch on  
Wednesdays  
Term 2, 2026  
(unless otherwise  
advised)**

*A fresh roll with  
a frankfurter.*

**Optional;**

- cheese
- mustard
- tomato sauce

# POLICIES/PROCEDURES

Our School's Policies and Procedures are managed online by SchoolDocs. They are maintained and updated regularly to make sure they comply with the Ministry of Education requirements and follow the Ministry's best-practice guidelines.

To familiarise yourself with SchoolDocs, go to the Parents and Whānau section on the SchoolDocs site – it has a brief description of SchoolDocs, and important information about parent involvement, communication and reporting, community conduct expectations, and social media guidelines. There is also a Quick Links for Parents and Whānau topic with links to the most relevant policies and procedures.

Policies are reviewed at regular intervals. Reviews are open to the board, staff, parents/caregivers/whānau. Reviewers can rate policy content as well as its implementation, and they can offer comments on both.

In Term 2, we are reviewing the following policies;

Term 2 policies	Review opens 20 April
• Daily School Bus*	
• School Swimming Pool*/ Swimming Off Site*	Board review
• Education Outside the Classroom (EOTC)	Board review
• EOTC Governance Roles and Responsibilities	
• EOTC Risk Assessment and Management	

Username: haurokovalley and Password: 6753



JANUARY 2025

## ABOUT THE REVIEW PROCESS

The SchoolDocs review process allows the school community to provide feedback on policies and procedures, and ensures information stays up to date. See the **Current Review** tab at the top of your site for more information about what's under review each term.

Policies under review have a **Start your review** button. Reviews open at the start of each term, and anyone in the school community can submit a review.

Currently under review

Start your review

Select your role at the school and follow the instructions to provide feedback on policies under review.



Staff member  
Board member  
Whānau  
Student

The review schedule indicates policies that are particularly important for the board to review, but all reviewers are welcome to submit feedback.

Reviewers can provide feedback on the **content** and **implementation** of policies that are under review.

**Content** feedback is for suggesting how policy information could be improved for schools.

**Implementation** feedback is for letting your school know how well the policy is being implemented.

When you've entered any comments and ratings, you can submit your review. You can also choose to be emailed a copy of your feedback.

Submit review



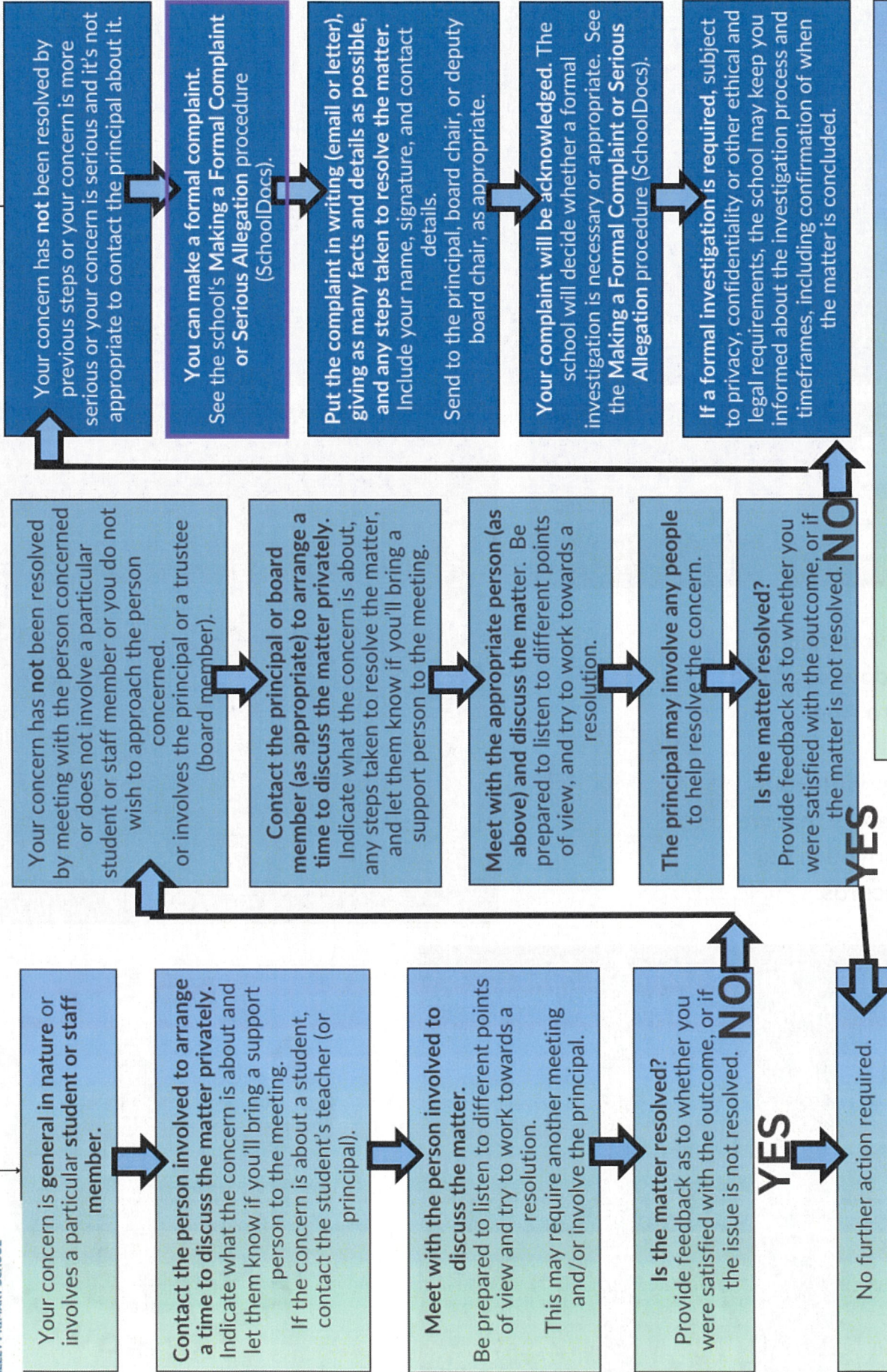
### WHAT HAPPENS TO REVIEW FEEDBACK?

Your feedback is sent to the SchoolDocs team, and to designated staff and board members at your school. The SchoolDocs team uses content feedback to make changes to policy information for all schools.

# HVP CONCERNS & COMPLAINTS PROCESS

## CONCERNS & COMPLAINTS

Most concerns can be resolved informally by discussions with the people concerned.



**NB:** Unless there are exceptional circumstances, a **complaint will not be considered unless the correct process has been followed.** You may be directed back to the staff member or principal to follow the process.

# SCHOOL NOTICES

## Attendance

If your child is sick and staying home or you have something on, e.g. a medical appointment, wedding, funeral, or other, then please let us know. You can contact us through the following ways;

1. Use our school student management system via the HERO Linc-Ed App.
2. Ring and speak with Karen, or leave a message on the school phone at 032266753.
3. Email Karen at office@haurokovalley.school.nz - she will enter the absence, and this advises classroom teachers.
4. Text Karen 0277777520.

Please do so by 9.30 am, as we are legally required to accurately record attendance, and this requires a follow-up with a phone call, email, or text to check in. Thanks!



To see your child's account, download the Hero App.

Register with your email address that we have for you in our records.



## School Account

If paying accounts by internet banking, please do so to

Hauroko Valley Primary School

Westpac:

03 1748 0030028 000

## Tui Base Camp Friday Lunch Orders

- Sausage & Chips \$6
- Fish Bites & Chips \$5
- Pies \$7
- Chicken Nuggets & Chips \$5
- Chips \$3
- Bacon & Egg Sandwich \$7
- Dagwood \$7
- Muffin \$5
- Cheese Roll \$3
- Scone \$5
- Sausage Roll \$6



# COMMUNITY NOTICES



## Tuatapere PĒPI PLAYGROUP

for babies 0-2 years old



*"Babies are born curious"*

Our playgroup for babies in Tuatapere offers a safe and interesting haven for babies and their whānau.

We provide a sensory rich play space to support the curiosity, free movement and self directed play of your baby.

Sessions invite you to slow down, do less, observe more and enjoy the wonder of infant play and learning. Sessions will be guided by experienced ECE facilitators.

**Thursday: 14 May & 11 June at 10am - 12pm**

**Venue: Tuatapere Playcentre,  
23B Orawia Road, Tuatapere  
Gold Coin Donation.**

For more details please contact Stu Guyton: [stuart.guyton@gmail.com](mailto:stuart.guyton@gmail.com)  
Southern REAP - Maree Day: [mareereap.co.nz](http://mareereap.co.nz) or  
Tuatapere Community Worker - Tina Colyer: [tcworkerextra.co.nz](http://tcworkerextra.co.nz)



## Active Bodies, Curious Minds For Preschoolers & Junior Class

Join us for this session designed to spark curiosity and joyful learning through intentional invitations to play tākaro.

Tamariki are encouraged to follow their interests and choose the play space that matches their energy, supporting resilience, self regulation, confidence, and emotional awareness.

Our movement-based area, based on Moving Smart's **Smart Step's** programme, invites children to climb, balance, jump, roll and swing, building strength, co-ordination and the physical and neurological foundations for thriving in learning environments.

A second, calmer space offers open ended, heuristic and loose parts play, where children can explore, experiment, create, and problem solve using sensory rich materials at their own pace.

This gathering also celebrates **whakawhānaungatanga** - bringing our community together to connect, support one another, sharing in the wonder of our tamariki's learning.

**Western Southland  
Clifden**

**DATE:**

Wednesday 27th May

**TIME:**

**Preschoolers** 10.30am - 12pm

**Junior Class** 12.30am - 1.30pm

**COST:**

Free of charge

**Venue:**

Hauroko Valley Primary School Hall  
956 Clifden Highway  
Clifden

For more details, please contact Southern REAP  
email: [maree@reap.co.nz](mailto:maree@reap.co.nz) or 027 732 7323



## FutureFERNs Programme

**30th April - 18th June (Term 2)**

**8 Weeks - Thursdays**



**Year 1&2:  
3:45 - 4:45pm**

**Year 3&4:  
5:00 - 6:00pm**

**\$35 per player**



Register now at:

<https://www.sporty.co.nz/viewform/497069>

**noel leeming**

# Friends & Family deals are here!

In-store only | 11 - 24 May 2026

**cost\* + 5%**

Computers, Whiteware, TVs and Cellular\*

**cost\* + 7.5%**

on all Smart Home

**cost\* + 10%**

storewide, exclusions apply

**15% OFF** Tech Solutions services offers



Offer valid from 11 May - 24 May 2026, in-store only and while stocks last. \*Cost reflects the average cost price of the product including administration and handling costs, and does not include volume related adjustments which may apply. Some of our advertised specials may be at a lower price than this offer but you will receive the best price available on the day for the item(s) you choose. \*\*The advertised discounts are off the previous in store ticketed price. Terms, conditions and exclusions apply. See noelleeming.co.nz/terms

2.5% of total sales will go to Variety - the Children's Charity



Scan this barcode in-store



**noel leeming**

0800 44 44 88 | Over 65 stores nationwide

Easy ways to pay



Ask us about Interest Free Finance options

**ILT STADIUM SOUTHLAND**

AFTER SCHOOL

# CLIMBING PROGRAMME

TURN TUESDAYS INTO EMPOWERING ADVENTURES!

Starts

**26 MAY**

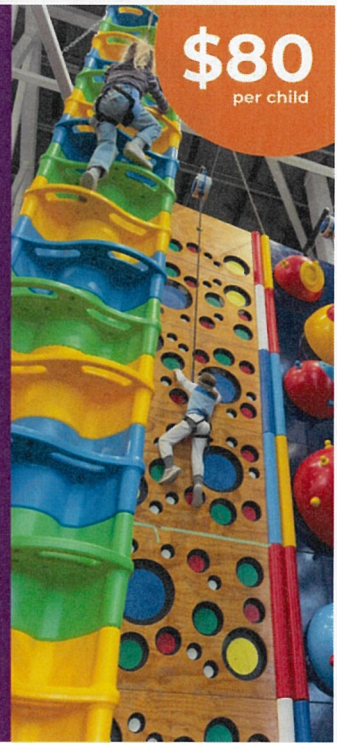
Every Tuesday for 6 weeks

**AGES 7 - 17**

Beginner | 4:00pm - 5:00pm

Intermediate | 5:00pm - 6:00pm

**\$80**  
per child



BUILD CONFIDENCE AND RESILIENCE



IMPROVE STRENGTH, BALANCE & COORDINATION



MAKE FRIENDS & HAVE FUN



DEVELOP SKILLS THAT LAST

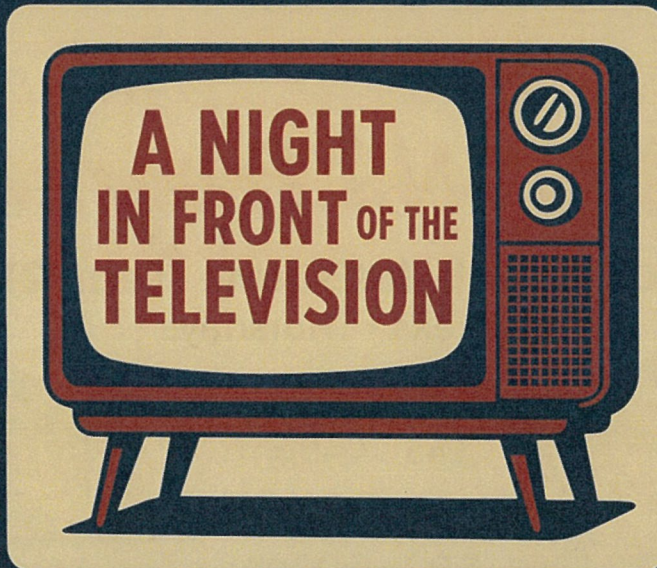
Limited spots available

**Enrol your child now**  
stadiumsouth.co.nz



# WATCH THIS SPACE

TUATAPERE COMMUNITY THEATRE BRINGS TO YOU



**FRIDAY 17<sup>TH</sup> AND SATURDAY 18<sup>TH</sup> JULY**

**MARK YOUR DIARIES NOW. TICKET DETAILS COMING SOON**